

DIPLOMA OF HIGHER EDUCATION IN PSYCHOLOGY

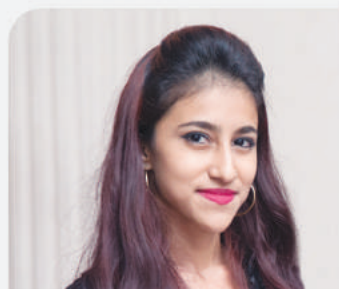
Overview

This program covers a wide range of topics and gives students a clear idea on the core areas of psychology. The curriculum of DHEP is designed to match the first two years of a British degree in Psychology. Therefore upon completion of the programme, students can directly enter the final year to complete their BSc (Hons) in Psychology.

I started my studies in Psychology with the DHEP programme and then entered the BSc final year offered by Coventry University at CIRP. I finished my studies a couple of months ago and now I am working in the HR department of a leading corporate organization in the apparel sector of Sri Lanka.

Course Information

Program Code	DHEP
Duration	2 Years
Semesters	06
RQF Credits	240
Compulsory	15
Delivery	On Site
Schedule	Full Time / Part Time
Intakes	February & September



Ilisha Perera
DHEP – 2014 Intake

Awarding body

Coventry University UK

Teaching Institute

CIRP School of Psychology

Entry Requirements

GCE A/L (2 Passes)

GCE O/L + Pre Degree Foundation

For non traditional entry routes contact a student adviser.

Assessments

Written Examinations

Course Work

Progression

Advance entry to final year of
BSc (Hons) Psychology

Modules

Introduction to Psychology	PSY001
Biopsychology	PSY002
Cognitive Psychology	PSY003
Developmental Psychology	PSY004
Social Psychology	PSY005
Research Methods	PSY006
Memory	PSY007
Personality	PSY008
Statistics 1	PSY009
Motivation & Emotion	PSY010
Human Mind & Language	PSY011
Statistics 2	PSY012
Psychometric Assessment	PSY014
Placement	PSY015
Advanced Topics in Biopsychology	PSY016

[For More Details](#)

071 109 46 46 / 071 109 46 16